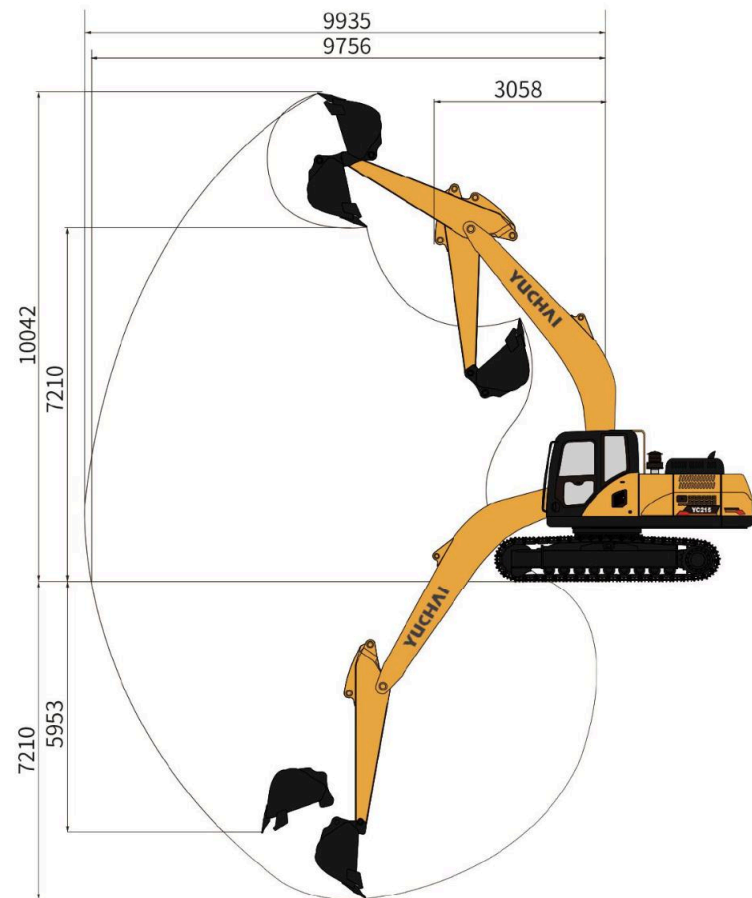
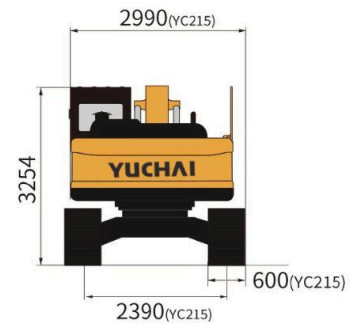
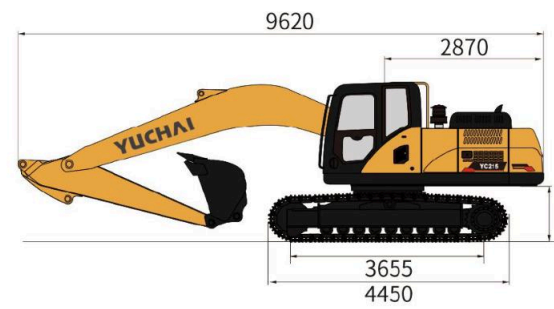


YC210 | YC215 Technical Specification



Basic parameters		YC210 YC215
Machine weight	22000 kg	22300 kg
Bucket capacity		1.0 m ³
Width of bucket		1285 mm
Performance parameters		
Engine model		Yuchai YCA05
Emission Standard		Euro V
Engine power		129 kW / 2200 rpm
Max. Gradeability		35 °
Max. digging force of arm		98.6 kN
Max. digging force of bucket		141.5 kN
Traveling speed		3/5 km/h
Max. hauling force		201kN
Slewing speed of platform		10~13 rpm
Operating parameters		
Max. digging height		10042 mm
Max. digging depth		7210 mm
Max. digging radius		9935 mm
Max. digging radius on ground level		9756 mm
Max. dumping height		7210 mm
Min. slewing radius		3058 mm
Max. vertical digging depth		5953 mm
Transportation dimensions		
Overall length		9620 mm
Overall width		2540 mm 2990 mm
Overall height		3254 mm
Other Parameters		
Width of undercarriage		2540mm 2990 mm
Length of track		4550 mm
Width of track		500mm 600 mm
Minimum ground clearance		485 mm
Height between platform and ground		1070 mm
Platform tail turning radius		2870 mm
Length to center of rollers		3655 mm
Fuel tank capacity		370 L 430 L
Hydraulic oil tank capacity		195 L 200 L
Track gauge		2040 mm 2390 mm
Working Pressure		35.2 Mpa
Flow rate		217×2+19.5 L/Min
AUX 1 Pressure/Flow rate		25 Mpa/217 L/Min
AUX 2 Pressure/Flow rate		25 Mpa/217 L/Min
Arm length (standard/longer)		3748 mm
Boom length		5700 mm

Specifications are subject to change without prior notice .



CE EAC EXCAVATOR

YUCHAI EXCLUSIVE SELLER SK/CZ
MAX-PERFORMANCE, S.R.O.



Address: Bzovík 184, 962 41 Bzovík
Email: info@yuchai-bagre.sk
Tel.: +421 907 075 414
Website.: www.yuchai-bagre.sk

BILLING DETAILS:
IČO: 36024937
DIČ: 2021337802
IČ DPH: SK2021337802

Machine weight : 22300 kg | Engine model : Yuchai YCA05
Bucket capacity: 1 m³ | Engine power : 129kW/2200rpm
Overall dimensions (L x W x H): 9620mm x 2990mm x 3254 mm

YC215

Equipment

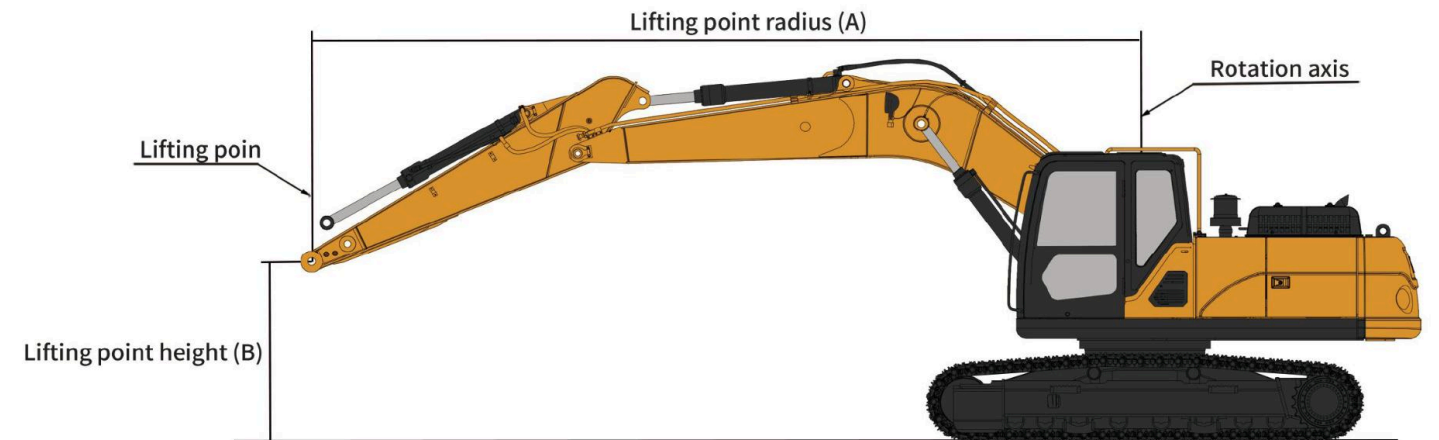
- ▶ Standards and requirements for special equipment vary by country.
- ▶ For more details on equipment options, please feel free to contact us.

Component Part	Description	Standard	Optional
Cabin	LCD instrument	•	
	AM/FM-Radio with Bluetooth	•	
	Cup holder	•	
	High-back suspension seat	•	
	Fabric air suspension seats		•
	Air conditioning	•	
	FOPS	•	
	ROPS	•	
	Front windshield wipers	•	
	Rearview mirrors	•	
	Rear camera	•	
	Cigarette lighter	•	
Working device	Hydraulic quick connector		•
	Tilting coupler		•
	Tiltrotator		•
	600 mm bucket		•
	0.8 m ³ Reinforced bucket		•
	1000 mm bucket		•
	1285 mm bucket	•	
	1600 mm bucket		•
	2000 mm trench bucket		•
	1400 mm screening bucket		•
	2000 mm tilting bucket		•
	2250 mm standard arm	•	
	2650 mm longer arm		•
	Hammer lines	•	
	Hydraulic hammer		•
	Auger		•
	Thumb		•
	Boom holding valve	•	
	Arm holding valve	•	
	Tracks	600 mm steel track	•
800 mm steel track			•
Hydraulic system	Traveling alarm		•
	Left & right proportional joysticks	•	
	Negative Flow Control (System)	•	
	ISO/SAE switch		•
	AUX1	•	
	AUX2	•	
	AUX1 Adjustable pressure	•	
	AUX1 & AUX2 Adjustable flow	•	
	Hydraulic quick coupler pipes	•	
	Hydraulic quick coupler	•	
Lighting	2 LED work lights at the front	•	
	Rear LED work light	•	
	1 boom LED work light	•	
Others	Electric fuel pump	•	
	Automatic lubricating system	•	



Standard Arm's Digging Force: 98.6 kN (market-leading performance)

- ▶ **Dual-arm versatility:** Standard/extended arm can meet the needs of different working conditions.
- ▶ **Key specs:** 1 m³ bucket | 10~13 rpm swing | 141.5 kN bucket digging force.
- ▶ **Robust construction:** The heavy-duty machine structure, engineered for China's demanding applications, handles North American and European job sites with ease.



Radius	2.0 m		3.0 m		4.0 m		5.0 m		6.0 m		7.0 m		8.0 m		Maximum Arm Reach Lifting Capacity	
Height (m)																
6.0 m	—	—	—	—	—	—	—	—	*4050	*4050	*3880	*3880	—	—	*2890	*2890
5.0 m	—	—	—	—	—	—	*4520	*4520	*4300	*4300	*4200	4320	—	—	*2860	*2860
4.0 m	—	—	*7690	*7690	*6030	*6030	*5190	*5190	*4710	*4710	*4420	4260	*3410	3500	*2880	*2880
3.0 m	—	—	—	—	*7410	*7410	*5980	*5980	*5190	5180	*4710	4180	*4420	3460	*2950	*2950
2.0 m	—	—	—	—	*8670	8770	*6740	6450	*5670	5040	*5020	4100	*4600	3410	*3070	2390
1.0 m	—	—	—	—	*9530	8520	*7360	6280	*6100	4930	*5300	4020	4910	3370	*3260	2430
0 m	—	—	*5630	*5630	*9940	8390	*7770	6160	*6410	4850	5880	3970	4870	3340	*3530	2550
-1.0 m	*5210	*5210	*7870	*7870	*10010	8340	*7940	6110	*6560	4800	5840	3940	—	—	*3920	2740
-2.0 m	*7700	*7700	*10580	*10580	*9790	8350	*7860	6100	*6510	4790	5840	3940	—	—	*4530	3660
-3.0 m	*10430	*10430	*11770	*11770	*9260	8410	*7510	6130	*6200	4820	—	—	—	—	*5260	4120
-4.0 m	*13820	*13820	*10450	*10450	*8320	8520	*6740	6220	—	—	—	—	—	—	*5410	4970

Notices

1. The lifting capacity calculation is based on ISO10560 and SAEJ1097 standards; the limit coefficient of hydraulic system is 0.87, and the tipping limit coefficient is 0.75.
2. The number marked with * means that it was restricted by the hydraulic system, and the number marked without * means that it was restricted by the stability.
3. The lifting point is the front support hole of the stick. It is not included the weight of the bucket and bucket cylinder. If additional accessories (such as bucket, cylinder, etc.) are added, it shall be deducted from the above lifting weight.